

# Higher Education Nursing Uniform and Kit – Student Fact Sheet



The tables below outline TAFE Queensland’s expectations related to the Bachelor of Nursing Uniform and Nursing Kit requirements. Uniforms are required when attending your practical intensive labs (Sim Labs) and for Professional experience Placement (PEP). Wearing uniforms forms part of the Student Rules and professional requirements for this course. Please refer to the Course Handbook for information student rules related uniforms and personal presentation.

PERMITTED / ALLOWED	
<b>POLO SHIRTS</b>	Students are required to purchase the relevant <b>TAFE Queensland shirt</b> for their studies and supply the remainder of their own uniform for use in professional experience placement.
<b>SHOES</b>	Shoes must be <b>BLACK, flat heeled, and fully closed-in (i.e. foot to ankle), with non-slip soles</b> . Please ensure they are <b>non-permeable to fluids and sharps</b> .  Please ensure lace ups do not extend the length of the shoe to the toe. <b>Leather</b> is recommended.
<b>PANTS</b>	Students are to wear the TAFE Queensland Polo shirt with <b>black full-length pants that fit loosely around the hips and legs</b> . Only TAFE Queensland approved scrub pants are permitted.
<b>HAIR</b>	Hair must be kept clean and hair must be secured away from the face. Hair any longer than the collar must be tied up.  Any students, who are required to wear a hijab (headscarf/ veil), please ensure it is in plain/neutral colours, such as black and it is tucked into your shirt. (infection control reasons).
<b>JEWELLERY</b>	Only <b>one flat band ring</b> and <b>one set of small ear studs</b> or sleepers are allowed.  <b>Fob watches</b> are required.
<b>FINGERNAILS</b>	Fingernails must be natural and of an <b>appropriate short length</b> and style to perform the tasks required in nursing care safely.
<b>HYGIENE</b>	Students are expected to attend in a <b>clean and tidy</b> manner with <b>appropriate hygiene</b> .



© iStock/stock.adobe.com. Used with permission



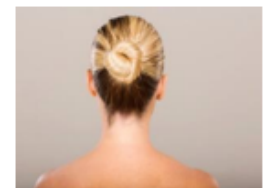
© TAFE Queensland 2022



© iStock/stock.adobe.com. Used with permission



© iStock/stock.adobe.com. Used with permission



© iStock/stock.adobe.com. Used with permission



© iStock/stock.adobe.com. Used with permission



© iStock/stock.adobe.com. Used with permission

## NOT PERMITTED

**POLO SHIRTS** A **longer-sleeved garment** worn under the TAFE Queensland shirt **is not permitted**. All students must remain bare below the elbows as per WHS requirements.

**SHOES** **Slip-ons, 'Mary-Jane', ballet style, canvas, mesh, 'crocs', thong/sandal, loafer styles, or runners** (even if they are black) **are not permitted**.

Shoes that will **absorb fluid** or can be **pierced by sharps** **are not permitted**.

**PANTS** The following **are not permitted**: **Skirts and shorts** of any kind, pants made from a **stretchy material in any style**. No **tights/leggings, jeans, figure-hugging, low rise, flared, 'chino', patterned, cargo, or ankle-hugging** styles

**HAIR** **Ponytails or plaits longer than the collar** and **unnatural hair colours** **are not permitted**.

**JEWELLERY** **Necklaces** and **bracelets** **are not permitted**. The Only exception is a medical alert bracelet.

All remaining **body piercings, rings** and **ear piercings** **are to be removed**. Watches are not to be **worn on the wrist**.

**FINGERNAILS** **Coloured** and **clear nail polish** and **false nails** **are not permitted**

**HYGIENE** Excessive **body odour**, or odour from **cigarette, cologne or perfume** **is not permitted**.

### PLEASE NOTE:

- Student identification **must** be clearly displayed on either the shirt collar or waist band **at all times**.
- Mobile phones **are not permitted** on your person during practical intensive sessions or on PEP
- Excessive makeup is considered **inappropriate** in clinical environments and discouraged.
- False eyelashes **are not permitted**.
- Lanyards or sunglasses worn on the head **are not permitted**.



Shutterstock/stock.adobe.com. Used with permission



Marisa Uja/stock.adobe.com. Used with permission

Shutterstock/stock.adobe.com. Used with permission



Shutterstock/stock.adobe.com. Used with permission



Production 8000/stock.adobe.com. Used with permission



Arcady/stock.adobe.com. Used with permission

# Nursing Kit

Students may source the following items from a supplier of their choice (*items are available through a range of online stores*). The prices and quality will vary between the suppliers listed however basic quality equipment will meet your kit requirements. Students will need to bring all items to each semesters' Sim Labs.



waraphong/stock.adobe.com.  
Used with permission

Aneroid  
Sphygmomanometer  
(Adult size latex free cuff)

Qty

1



RedCupStudio/stock.adobe.com.  
Used with permission

Stethoscope

1



shanvood/stock.adobe.com.  
Used with permission

Medical penlight  
with pupil gauge

1



shanvood/stock.adobe.com.  
Used with permission

Nursing Fob Watch with  
a second hand

1



wiparat/stock.adobe.com.  
Used with permission

USB stick

1

These items are available for purchase from a range of Australian online suppliers and university stores including, but not limited to:

- [ParagonCare](#)
- [Medshop Australia](#)
- [Nursestuff](#)
- [Medisave Australia](#)
- [Nurses Only](#)
- [eNurse](#)
- [Nurse Supplies](#)
- [The Nurse Shop](#)
- [The Stethoscope Shop](#)
- [Paramedic Shop](#)

Note: The information above is current as at 26.02.2024. Please advise the Course Coordinator if you experience any issues or incorrect information.