

2026

Course Guide



Ipswich, Darling Downs,
South Burnett, Fitzroy Region
and South West Queensland



Our locations



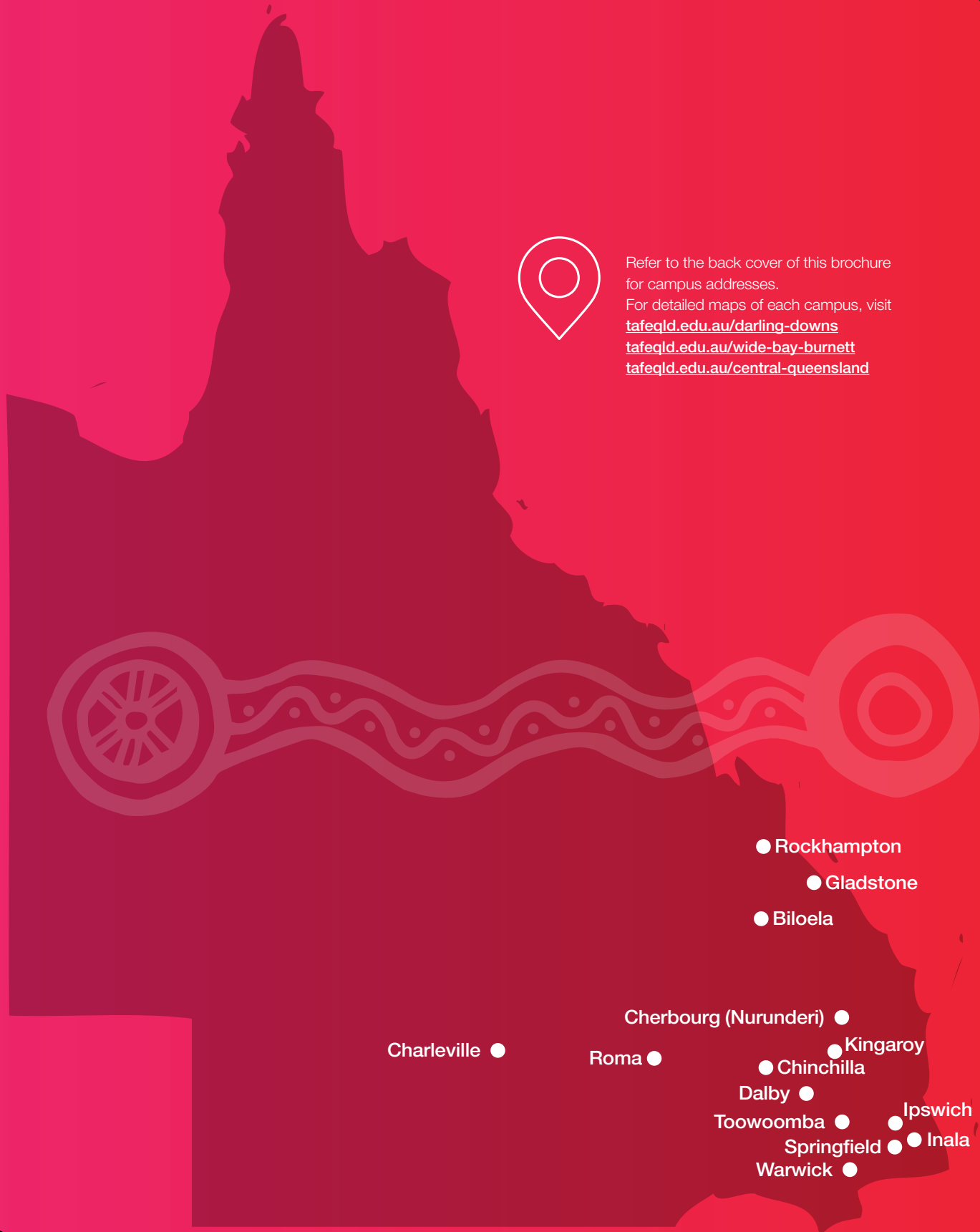
Refer to the back cover of this brochure for campus addresses.

For detailed maps of each campus, visit

tafeqld.edu.au/darling-downs

tafeqld.edu.au/wide-bay-burnett

tafeqld.edu.au/central-queensland



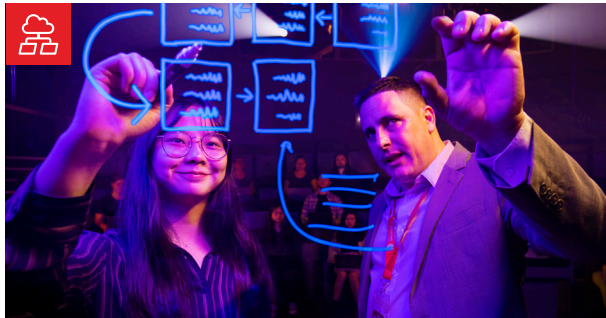


60 LOCATIONS ACROSS QUEENSLAND

No other provider can match
TAFE Queensland for scale
and location options.

Study areas

Whether you dream of a career in Nursing, Hospitality, Business, IT, Community Services or a trade, TAFE Queensland has the course options to kick-start your career.



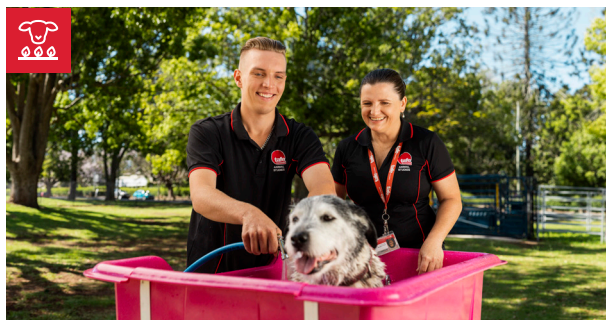
Business and IT

14



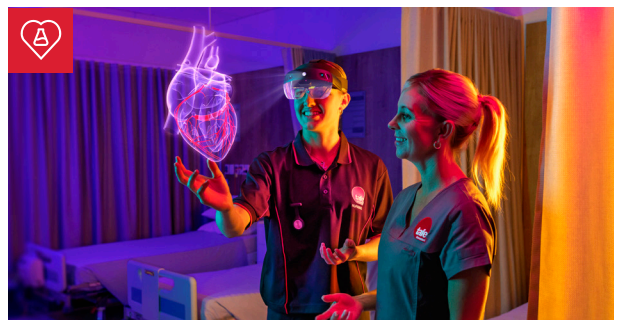
Education and Community

15



Environment and Animal Services

18



Health and Science

20



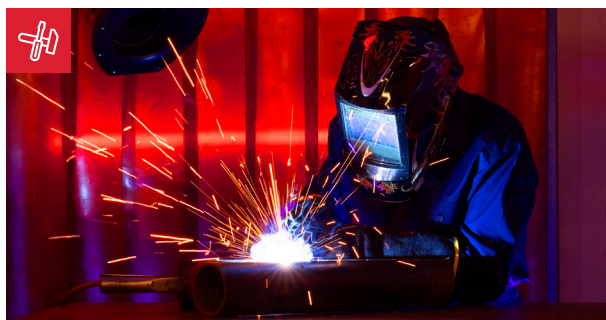
Infrastructure and Transport

22



Service Industries

23



Trades

25

Contents

Our locations	2
Study areas	4
Why study at TAFE Queensland?	6
Ways you can study	7
Support services	8
Qualifications explained	10
Pathways to your future	11
Subsidies and payment options	12
How to apply	12
Apprenticeships and traineeships	13
Business and IT	14
Education and Community	15
Environment and Animal Services	18
Health and Science	20
Infrastructure and Transport	22
Service Industries	23
Trades	25



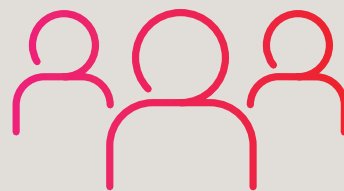
We respectfully acknowledge the Traditional Custodians of the lands on which TAFE Queensland operates. We recognise the continuing connection to land, waters, culture and kin that Aboriginal and Torres Strait Islander peoples uphold. We pay our respects to Elders past and present, who give us strength, inspiration and guidance to deliver great training outcomes for all Queenslanders.

In many areas of Australia it is considered offensive to publish photographs of Aboriginal and Torres Strait Islander people who are deceased. Readers are warned that this publication may inadvertently contain such photographs.

Artwork elements from TAFE Queensland's Reconciliation Action Plan artwork 'Connecting Knowledge – Connecting Cultures' by Riki Salam, We are 27 Creative. Visit tafeqld.edu.au/rap to view the Reconciliation Action Plan.

Why study at TAFE Queensland?

We train more than **144,000**
students each year



We're in partnership
with some of Australia's
top universities

Over 140 years
of experience



**Industry
experienced**
teachers, eager
to share their
knowledge

**Practical
hands-on**
courses that get
you job-ready
sooner



60 +
locations
across
Queensland

**Flexible &
supportive**
learning
environment



More than 86% of
our graduates go on to
work or further study

400 +
industry-relevant courses from
certificates to bachelor degrees



Mackenzie
Business graduate

Ways you can study



On campus

You'll learn face-to-face with a teacher in one of our learning spaces like a classroom, workshop, laboratory or simulated learning environment. You can also interact with your teachers using live video or web conference programs. You may also need to access our learning management system, Connect, to access resources, assessment details or submit assessments.



On campus with some online

You'll primarily learn face-to-face with a teacher in one of our learning spaces like a classroom, workshop, laboratory or simulated learning environment. In this study mode you will attend a TAFE Queensland campus most of the time, but some of your classes or training may be via video or web conference programs (like Zoom).



Online self-directed

Our online self-directed courses are designed for individuals who want the flexibility to study at their own pace and cannot or prefer not to attend on campus or be locked into attending classes at specified times. You will access learning materials including documents, videos, assessments and more through Connect – our learning management system and will complete self-paced study.



Online virtual classroom

Your course will be delivered online, but to a scheduled timetable. To complete your study you will interact with your teachers and other students using live video or web conference programs (like Zoom), and access learning materials through Connect – our learning management system.



Recognition of prior learning (RPL)

If you've completed prior study or have significant work experience, applying for credit transfers or Recognition of Prior Learning (RPL) can reduce study time and costs.



Online with on campus practical training

Your course is primarily online, however you will need to come into a campus to undertake face-to-face practical learning and assessment. As an online student you will access learning materials through Connect – our learning management system and may interact with your teachers and other students using live video or web conference programs.



Residential blocks

Some of our courses are delivered via mixed mode in intensive blocks of training and distance education. You may be required to travel away from home to complete this type of study. Funding support may be available to assist students with travel, accommodation and meal costs. Students must provide evidence of ABSTUDY eligibility.



Apprenticeship

Earn while you learn. Work and earn a wage with an employer while you complete hands-on training and a nationally-recognised qualification.



Traineeship

Work and learn at the same time. Combine on-the-job training with an employer, while you study and get paid.



TAFE at School

If you're a Year 10*, 11 or 12 student, you can complete a range of certificate I and certificate II courses. TAFE at School courses work in with your existing high school studies and also count towards your Queensland Certificate of Education (QCE).

*Subject to a letter of support from the school Principal.

Support services

Everyone's journey is different and sometimes you need some extra support. We're here to help. Free and confidential support services are available to all students. tafeqld.edu.au/student-support-services



Learning support

The Learning Skills team is ready to assist you with:

- Skills Check assessment tool
- Your digital, reading, writing and mathematics skills
- Succeeding in your course, whichever way you are studying
- Time management and preparing for exams
- Help with assignments, referencing and essay writing
- Studiosity: 24/7 on-demand, online study help for academic literacy skills and core subject support.



Skills Check

Before you enrol in your course, you may be invited to complete a Skills Check - an online assessment tool used by TAFE Queensland to understand your current abilities in English, Maths and using Digital Technology.

The Skills Check measures your levels against the recommended or required benchmarks, listed on your course page, based on the Australian Core Skills Framework (ACSF).

Unless it is a formal entry requirement for your course, your results will not stop you from enrolling. They simply help us to provide the right support to help you succeed.



AccessAbility support

If you identify with having a disability, our staff can work with you to develop a support plan. This may include:

- Communicating with your teacher on your behalf, if required
- Providing sign language interpreters, readers and scribes
- Loaning you assistive technology
- Coordinating alternative assessment arrangements.



Counselling support

Short-term counselling is available for all students. Support services include:

- Deciding what career path to follow
- Choosing the right course
- General difficulties with student life
- Personal and complex issues
- Cross-cultural and special needs
- Service referrals for long-term support.



Aboriginal and Torres Strait Islander student support

Indigenous Student Support Officers are available to assist Aboriginal and Torres Strait Islander students to reach their educational goals by providing support in a culturally sensitive manner. Indigenous Student Support Officers assist with:

- Enrolment processes
- Centrelink ABSTUDY enquiries
- Tutor support
- Referrals to other community service providers
- Enrolment into 'Away from Base' courses
- Personal support.

To talk to an Indigenous Student Support Officer call **1300 308 233**.



Internet/WiFi

WiFi hot spots are available at various campuses. Student computers are equipped with Internet access. To find out how to connect, visit tafeqld.edu.au/wifi



Libraries

All TAFE Queensland students receive automatic library membership which gives you access to our physical library services as well as an extensive range of digital resources that are available to use at any time.

Our library network allows both online and on-campus students to access information and borrow resources from across all TAFE Queensland libraries.

Our fully qualified library staff can help you:

- Use the library facilities including the library catalogue
- Access digital resources including eBooks, eJournals, streaming videos, and databases
- Reserve resources from other campuses
- Start to research your assignment topic
- Reference assignment sources to avoid copyright and plagiarism issues.

library.tafeqld.edu.au



Qualifications explained

We offer a full range of nationally-recognised qualifications from entry-level certificates through to advanced diplomas. We also offer comprehensive trade training from beginner to advanced levels.



Certificates

Certificate I

Certificate I courses cover base-level skills for entry into the workforce.

Certificate II

Certificate II courses prepare you for entry-level positions or apprenticeships in a variety of industries.

Certificate III

Certificate III qualifications are ideal for those wanting to gain a trade, change careers or move out of entry-level roles.

Certificate IV

Certificate IV courses typically interest those who want to advance their careers in the industry they already work in, or further develop skills and knowledge acquired through previous study.



Diplomas

Diploma

Diploma courses develop broad and in-depth skills in professional, technical or creative fields.

Advanced Diploma

An advanced diploma is ideal for ambitious professionals wanting to fast-track their career.



University pathways

There's more than one way to get into your dream university course. We have a range of pathway options that can get you started on your university degree sooner.

Explore your options at: tafeqld.edu.au/courses/pathways-to-university



Trade qualifications

Pre-apprenticeship courses

Pre-apprenticeships are a great way to improve your prospects of gaining an apprenticeship, develop practical skills in your trade, and gain credit towards a full apprenticeship.

Apprenticeships

Earn while you learn by undertaking an apprenticeship with TAFE Queensland. Completing an apprenticeship is essential if you want to become a qualified tradesperson.

Traineeships

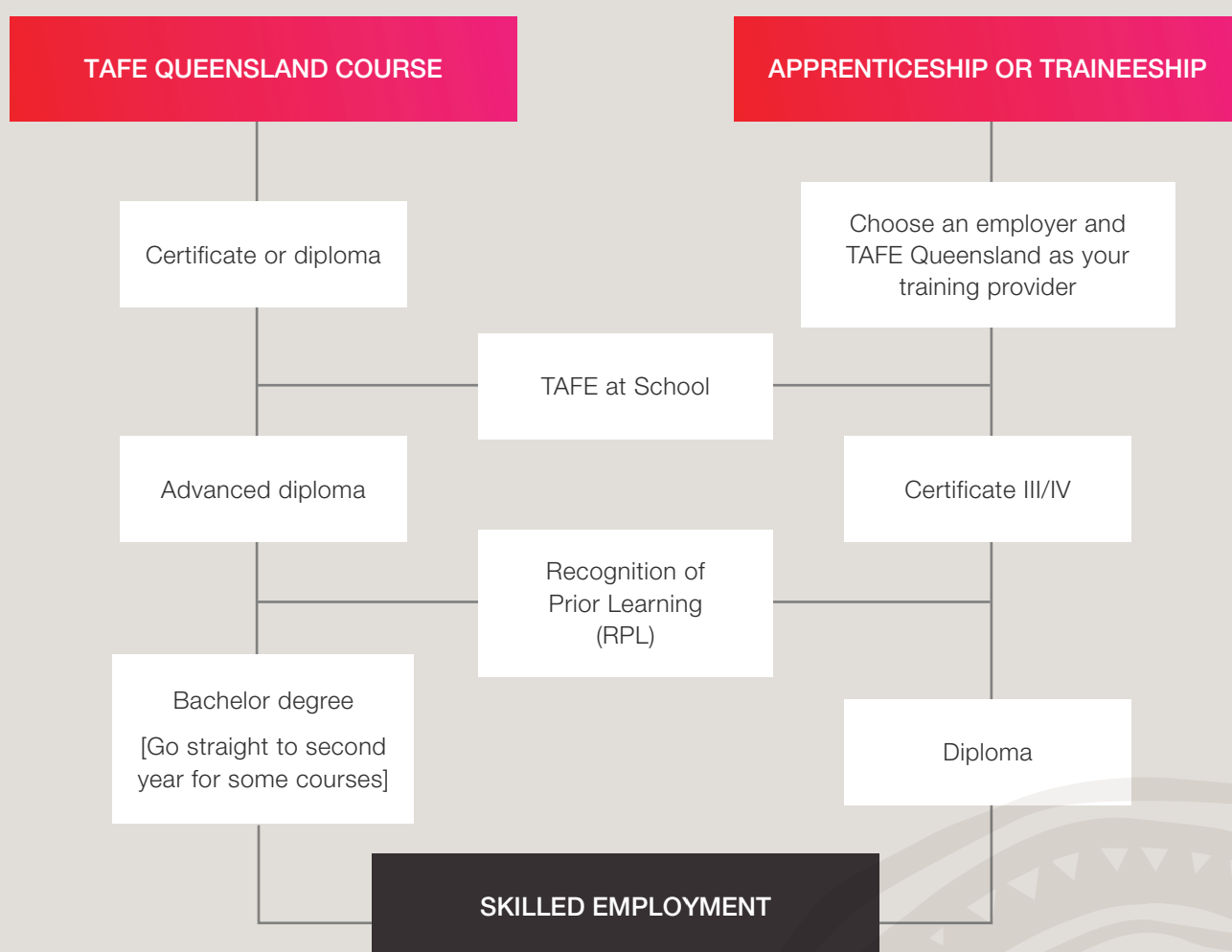
Much like apprenticeships, traineeships give you the opportunity to combine training with a paying job. Trainees are trained in vocational areas such as early childhood education and care, or business.

Post-trade training

Post-trade training is great if you want to specialise, gain a specific trade licence, gain credit towards university, or expand your horizons after completing an apprenticeship.

Pathways to your future

TAFE Queensland has a range of pathway options that can get you started on your university degree sooner. If you didn't finish Year 12, complete the required prerequisites, or get the ATAR you needed, TAFE Queensland can help you get into your preferred university degree.



Subsidies and payment options



As a TAFE Queensland student, there are a range of subsidies, concessions, loans and scholarships you may be eligible for, to assist you with the cost of your study.* For more information, visit tafeqld.edu.au/what-it-costs



Payment plans

TAFE Queensland offers an interest free payment plan option to approved students allowing them to pay their fees in instalments over the duration of their study. Payment plans are available for both full fee paying students and students paying a subsidised tuition fee. Terms and conditions apply and payment plans are only offered through direct debit bank contracts. To find out if you're eligible for government and independent funding to help reduce the cost of your training, visit tafeqld.edu.au/eligibility-calculator



VET Student Loans

If you are eligible, you may be able to apply for a VET Student Loan. You can view the fee schedules for the list of available courses that are eligible for a VET Student Loan at tafeqld.edu.au/vsl-fee-schedules



Student portal

Through the portal, you can pay your fees, update your details, access your Statement of Account, check your academic results and submit electronic requests. For example: Credit Transfer application, change of name. tafeqld.edu.au/student-portal



Scholarships

Achieve your career goals with the help of a TAFE Queensland Scholarship. For further information, visit scholarships.tafeqld.edu.au

*Subsidies and payment options are subject to change.

How to apply

1 Choose your course

Make sure you fully understand the course details and fees.

2 Entry requirements

Some courses don't have any entry requirements, however may require previous qualifications, skills or knowledge. You can find this information on all course pages on our website under Important Information.

3 Your rights and responsibilities as a student

It is important that you take the time to familiarise yourself with the TAFE Queensland Student Rules and Policies on our website. Visit tafeqld.edu.au/student-rules

4 Complete your application

- Go to tafeqld.edu.au/eligibilitydocuments to view eligibility documents required.
- Gather and upload your eligibility documents to submit online via the Apply Now button on the course you want to apply for, through the Student Portal.
- Arrange payment and enrol.

Apprenticeships and traineeships



Apprenticeships and traineeships combine paid work with structured training to gain a qualification. At TAFE Queensland, we work with your employer to help you successfully gain competence in a trade (apprenticeship) or a vocational area (traineeship).

Upon completion, you may find yourself in a great place to keep working, go on to future study or even start your own business!

Did you know you can start an apprenticeship or traineeship during high school, after school or if you've been in the workforce for a long time?

Traineeships vary in length from six months to three years, while apprenticeships generally take three to four years to complete. TAFE Queensland will assist you and your employer to get started and will provide ongoing support every step of the way!



Four easy steps to become an apprentice or trainee

1 Choose the right apprenticeship or traineeship

- Think about what you enjoy doing and what your interests are.
- Speak to your family, friends or your school career counsellor or guidance officer.
- Get the facts at apprenticeshipinfo.qld.gov.au

2 Find an employer

You can be employed directly by a business. The business will pay your wages and train you with the support of a training organisation

To find an employer:

- Contact businesses either in person or via email
- Apply for jobs advertised in the newspaper
- Search for jobs on websites: workforceaustralia.gov.au, seek.com.au and careerone.com.au
- Use your personal networks – talk to family and friends to see if they know anyone who could employ you as an apprentice or trainee.
- Contact a Workforce Australia provider – these organisations can provide you with a list of job vacancies in your area. Visit workforceaustralia.gov.au
- You can be employed by a group training organisation who will place you with different businesses to gain on-the-job experience, pay your wage and organise your training. To find a group training organisation visit desbt.qld.gov.au/training/employers/gto

3 Choose your training partners

- Work with an Apprenticeship Connect Australia Provider: They will work with you and your employer at this stage to help you complete the training contract.
- Choose a training organisation: You and your employer will choose a training organisation (TAFE) who will work with you throughout the apprenticeship or traineeship. Visit the Apprenticeship Connect Australia Provider at australianapprenticeships.gov.au for more information.

4 Get started

- Complete your paperwork: Speak to your employer and your training organisation to complete your paperwork and develop your training plan.
- Use the probationary period: Probation is a period when the apprentice or trainee works and trains with an employer before each decides whether to continue.



Business and IT

Computers and information technology are vital tools in any business and qualified employees with information and communications technology (ICT) skills are always in demand. Get your foot in the door or develop skills to specialise in telecommunications, information, digital media, support, network administration, and web technologies.

Career outcomes include: • ICT Technician • ICT Security Officer • Computer Programmer • Web Developer
Network Administrator • Cyber Security Administrator • Network Engineer • Network Support Officer

Course		Mode	Location
Information Technology			
22603VIC	Certificate IV in Cyber Security	●	Ipswich, Toowoomba
ICT30120	Certificate III in Information Technology	●	Ipswich, Toowoomba
ICT50220	Diploma of Information Technology (Advanced Networking and System Administration Networking and System Administration)	●	Ipswich, Toowoomba

Course Mode

- On campus
- On campus with some online
- Online self-directed
- Online virtual classroom
- Online with on campus practical training
- Apprenticeship or traineeship



Education and Community

Discover career opportunities within Australia and overseas with our range of education and community courses.

You can develop hands-on skills for a rewarding career in early childhood education and care, or education support, and give children a fun, safe and supportive environment to learn and grow. Or you can work to promote the safety and well-being of children, families, and at-risk people in community services.

If you want to develop or improve your English language skills, prepare to enter or re-enter the workforce, take the first step towards a vocational pathway, or teach others, TAFE Queensland has a course to get you there.

Vocational placement requirements may apply.

Career outcomes include: • Child Protection Officer • Community Health Worker • NDIS Support Worker
Counsellor • Disability Officer • Aged Care Worker • Early Childhood Educator • Family Day Carer • VET Educator

Course		Mode	Location
Child Care			
CHC30121	Certificate III in Early Childhood Education and Care	●	Charleville, Chinchilla, Dalby, Ipswich, Kingaroy, Roma, Springfield, Toowoomba, Warwick
CHC30121	Certificate III in Early Childhood Education and Care	●	Charleville, Chinchilla, Dalby, Ipswich, Kingaroy, Roma, Springfield, Toowoomba, Warwick
CHC50121	Diploma of Early Childhood Education and Care	●	Charleville, Chinchilla, Dalby, Ipswich, Kingaroy, Roma, Springfield, Toowoomba, Warwick
CHC50121	Diploma of Early Childhood Education and Care	●	Charleville, Chinchilla, Dalby, Ipswich, Kingaroy, Roma, Springfield, Toowoomba, Warwick,

Course Mode

- On campus
- On campus with some online
- Online self-directed
- Online virtual classroom
- Online with on campus practical training
- Apprenticeship or traineeship



Course		Mode	Location
Community Services			
CHC32015	Certificate III in Community Services	●	Kingaroy, Springfield, Toowoomba
CHC32015	Certificate III in Community Services	●	Kingaroy, Springfield, Toowoomba
CHC33021	Certificate III in Individual Support (Ageing and Disability)	●	Kingaroy, Roma, Warwick
CHC33021	Certificate III in Individual Support (Ageing and Disability)	●	Nurunderi
CHC33021	Certificate III in Individual Support (Ageing and Disability)	●	Charleville, Roma
CHC33021	Certificate III in Individual Support (Ageing and Disability)	●	Charleville
CHC33021	Certificate III in Individual Support (Ageing)	●	Ipswich, Springfield, Toowoomba
CHC33021	Certificate III in Individual Support (Ageing)	●	Kingaroy, Springfield, Toowoomba, Warwick
CHC33021	Certificate III in Individual Support (Disability)	●	Ipswich, Springfield, Toowoomba
CHC33021	Certificate III in Individual Support (Disability)	●	Ipswich, Kingaroy, Springfield, Toowoomba, Warwick
CHC40321	Certificate IV in Child, Youth and Family Intervention	●	Springfield, Toowoomba
CHC40421	Certificate IV in Youth Work	● ●	Springfield, Toowoomba
CHC42021	Certificate IV in Community Services	● ●	Springfield, Toowoomba
CHC43121	Certificate IV in Disability Support	●	Ipswich, Kingaroy, Springfield, Toowoomba, Warwick
CHC43315	Certificate IV in Mental Health	●	Toowoomba
CHC50321	Diploma of Child, Youth and Family Intervention	●	Springfield, Toowoomba
CHC50421	Diploma of Youth Work	●	Springfield, Toowoomba
CHC51015	Diploma of Counselling	● ●	Springfield, Toowoomba
CHC52021	Diploma of Community Services	●	Springfield
CHCSS00129	Individual Support - Ageing	●	Springfield, Toowoomba
CHCSS00133	Induction to Disability Support	●	Springfield, Toowoomba

Course Mode

● On campus ● On campus with some online ● Online self-directed ● Online virtual classroom
 ● Online with on campus practical training ● Apprenticeship or traineeship



Course		Mode	Location
Education and Training			
TAE40122	Certificate IV in Training and Assessment	● ●	Ipswich
English and Foundation Skills			
22636VIC	Course in Initial EAL	●	Biloela, Gladstone, Inala, Ipswich, Kingaroy, Rockhampton, Toowoomba, Warwick
22637VIC	Course in EAL	●	Biloela, Gladstone, Inala, Ipswich, Kingaroy, Rockhampton, Toowoomba, Warwick
22638VIC	Certificate I in EAL (Access)	●	Biloela, Gladstone, Inala, Ipswich, Kingaroy, Rockhampton, Toowoomba, Warwick
22639VIC	Certificate II in EAL (Access)	●	Biloela, Gladstone, Inala, Ipswich, Kingaroy, Rockhampton, Toowoomba, Warwick
22640VIC	Certificate III in EAL (Access)	●	Biloela, Gladstone, Inala, Ipswich, Kingaroy, Rockhampton, Toowoomba, Warwick
11137NAT	Course in Skills to Access Learning Pathways	●	Biloela, Gladstone, Inala, Ipswich, Kingaroy, Nurunderi, Rockhampton, Toowoomba, Warwick
11138NAT	Course in Skills to Develop Learning Pathways	●	Biloela, Gladstone, Inala, Ipswich, Kingaroy, Nurunderi, Rockhampton, Toowoomba, Warwick
11139NAT	Certificate I in Skills for Education and Training Pathways	●	Biloela, Gladstone, Inala, Ipswich, Kingaroy, Nurunderi, Rockhampton, Toowoomba, Warwick
11140NAT	Certificate II in Skills for Education, Training and Employment Pathways	●	Biloela, Gladstone, Inala, Ipswich, Kingaroy, Nurunderi, Rockhampton, Toowoomba, Warwick
High school learning and university preparation			
11240NAT	Certificate IV in Adult Tertiary Preparation	●	Ipswich

Course Mode

- On campus ● On campus with some online ● Online self-directed ● Online virtual classroom
 ● Online with on campus practical training ● Apprenticeship or traineeship



Environment and Animal Services

Whether you're looking for a career in the great outdoors, have a passion for conservation, or want to care for animals, we have a course for you.

Our practical courses will allow your skills to bloom and qualify you to work across a wide range of jobs in agriculture, horticulture and plant production. Or if working with creatures great and small is your goal, we'll give you the skills you need to launch your career in animal or veterinary services.

Career outcomes include: • Pet Groomer • Wildlife Animal Carer • Veterinary Nurse • Agronomist • Park Ranger Horticulturalist • Landscaper

Course		Mode	Location
Agriculture			
AHC20122	Certificate II in Agriculture	●	Charleville, Kingaroy, Roma, Toowoomba
AHC30122	Certificate III in Agriculture	●	Charleville, Ipswich, Kingaroy, Roma, Toowoomba
AHC32822	Certificate III in Rural Operations	●	Toowoomba
AHC32822	Certificate III in Rural Operations	●	Workplace - existing workers
AHC51422	Diploma of Agribusiness Management	● ●	Toowoomba
AHCSS00074	Agricultural Chemical Skill Set	●	Roma
NONAC05001	Commercial Wildlife Harvesting	●	Toowoomba
NONAC05002	Wild Animal Field Harvesting	●	Toowoomba
SSFWP0001	Maintain Chainsaws, Trim and Cut Felled Trees Skill Set	●	Ipswich

Course Mode

- On campus
- On campus with some online
- Online self-directed
- Online virtual classroom
- Online with on campus practical training
- Apprenticeship or traineeship



Course	Mode	Location
Animal Services		
ACM30122 Certificate III in Animal Care Services	●	Toowoomba
ACM40418 Certificate IV in Veterinary Nursing	●	Toowoomba
Horticulture		
AHC20422 Certificate II in Horticulture	●	Ipswich, Toowoomba
AHC30722 Certificate III in Horticulture	●	Ipswich, Toowoomba
AHC30921 Certificate III in Landscape Construction	●	Ipswich, Toowoomba
AHC31024 Certificate III in Parks and Gardens	●	Ipswich, Toowoomba

STUDY ONLINE

Studying online with TAFE Queensland gives you access to our huge range of nationally-recognised qualifications with the flexibility and freedom to study in a way that suits you.

//LEARN MORE



Course Mode

- On campus
- On campus with some online
- Online self-directed
- Online virtual classroom
- Online with on campus practical training
- Apprenticeship or traineeship



Health and Science

Whether you're just starting out, want to upskill, or are looking to make a change, follow your passion for helping others with a career in health and sciences.

Our purpose-built facilities feature industry-standard equipment and the latest in technology, so you can put theory into practice straight away. Combined with experienced teachers and vocational placements, you'll graduate with skills employers want.

Career outcomes include: • Aboriginal and Torres Strait Islander Health Worker Assistant in Nursing (AIN) Pathology Assistant • Laboratory Assistant • Enrolled Nurse

Course		Mode	Location
Allied Health			
CHCSS00123	Dementia Support - Accredited Skill Set	●	Springfield Toowoomba
CHCSS00130	Individual Support - Disability	●	Springfield Toowoomba
HLT30121	Certificate III in Aboriginal and/or Torres Strait Islander Primary Health Care	● ●	Toowoomba
HLT33115	Certificate III in Health Services Assistance	●	Ipswich, Springfield, Toowoomba
HLT33115	Certificate III in Health Services Assistance	●	Springfield, Toowoomba
HLT40121	Certificate IV in Aboriginal and/or Torres Strait Islander Primary Health Care	●	Toowoomba

Course Mode

- On campus ● On campus with some online ● Online self-directed ● Online virtual classroom
● Online with on campus practical training ● Apprenticeship or traineeship



Course		Mode	Location
Allied Health (continued)			
HLT42021	Certificate IV in Massage Therapy	●	Springfield, Toowoomba
HLT50221	Diploma of Aboriginal and/or Torres Strait Islander Primary Health Care Management	●	Toowoomba
HLT52021	Diploma of Remedial Massage	● ● ●	Springfield, Toowoomba
SSHLT0029	CPR Skill Set	●	Charleville, Chinchilla, Dalby, Ipswich, Kingaroy, Nurunderi, Roma, Springfield, Toowoomba, Warwick
SSHLT0031	First Aid and CPR Skill Set	●	Charleville, Chinchilla, Dalby, Ipswich, Kingaroy, Nurunderi, Roma, Springfield, Toowoomba, Warwick
SSHLT0037	Early Childhood Education and Care (ECEC) First Aid and CPR Skill Set	●	Charleville, Chinchilla, Dalby, Ipswich, Kingaroy, Roma, Springfield, Toowoomba, Warwick
Laboratory Science			
MSL30122	Certificate III in Laboratory Skills	●	Toowoomba
Nursing			
CHCSS00070	Assist Clients with Medication Skill Set	●	Springfield, Toowoomba
HLT54121	Diploma of Nursing	●	Ipswich, Toowoomba
HLT54121	Diploma of Nursing	●	Chinchilla, Dalby, Kingaroy, Roma, Toowoomba, Warwick

Course Mode

● On campus ● On campus with some online ● Online self-directed ● Online virtual classroom
● Online with on campus practical training ● Apprenticeship or traineeship



Infrastructure and Transport

TAFE Queensland's range of transport and logistics courses will get you moving in an exciting career. Develop specialist knowledge in transport and logistics planning, supply chain management, and operations and risk management with our advanced-level courses.

The logistics and warehousing industries involve the storage and distribution of goods and products between suppliers and customers. During your study, you'll gain valuable supply chain skills including receiving and dispatching goods, picking and processing orders, stocktaking, and managing transportation.

You can also learn how to transport your passengers or cargo safely between destinations and set yourself on the road to a career as a freight or bus driver.

Career outcomes include: • Bus Driver • Freight Handler • Logistics Manager • Warehouse Supervisor

Course		Mode	Location
Transport			
SSTLI0007	Licence to Operate a Forklift Truck Skill Set	●	Dalby, Ipswich, Kingaroy, Roma, Toowoomba, Warwick
TLI30321	Certificate III in Supply Chain Operations	● ●	Ipswich, Toowoomba
TLI31222	Certificate III in Driving Operations	● ●	Toowoomba
TLI50224	Diploma of Logistics	●	Ipswich

Course Mode

- On campus ● On campus with some online ● Online self-directed ● Online virtual classroom
● Online with on campus practical training ● Apprenticeship or traineeship



Service Industries

Create an exciting and memorable career in events, hair and beauty, or hospitality and cookery when you study one or more of our service industries courses.

At TAFE Queensland you'll not only learn the theory, but you'll develop hands-on skills and get real-world experience to give you the advantage in your industry of choice.

Learn using industry-standard equipment and technology in our purpose-built facilities. Get the skills, knowledge and confidence to work with clients and bring your career to life.

Vocational placement requirements may apply.

Career outcomes include: • Banquet Cook • Chef • Event Planner • Functions Coordinator • Beauty Therapist • Makeup Artist • Nail Technician • Barber • Hairdresser • Concierge • Restaurant Manager • Pastry Sous Chef

Course		Mode	Location
Hair and Beauty			
SHB20121	Certificate II in Retail Cosmetics	●	Ipswich, Toowoomba
SHB20216	Certificate II in Salon Assistant	●	Ipswich, Toowoomba
SHB20216	Certificate II in Salon Assistant	●	Ipswich, Toowoomba, Nurunderi, Warwick
SHB30121	Certificate III in Beauty Services	● ●	Ipswich, Toowoomba
SHB30321	Certificate III in Nail Technology	● ●	Ipswich, Toowoomba
SHB30416	Certificate III in Hairdressing	● ●	Ipswich, Toowoomba
SHB30416	Certificate III in Hairdressing	● ●	Dalby, Ipswich, Kingaroy, Toowoomba, Warwick
SHB30516	Certificate III in Barbering	●	Ipswich, Toowoomba

Course Mode

● On campus ● On campus with some online ● Online self-directed ● Online virtual classroom
● Online with on campus practical training ● Apprenticeship or traineeship

Course		Mode	Location
Hair and Beauty (continued)			
SHB30516	Certificate III in Barbering	●	Dalby, Ipswich, Kingaroy, Toowoomba, Warwick
SHB50121	Diploma of Beauty Therapy	● ●	Ipswich, Toowoomba
SSSHB0001	Barbering Skill Set	●	Ipswich, Toowoomba
SSSHB0007	Chemical Reformation Skill Set	●	Ipswich, Toowoomba
Hospitality and Cookery			
AMP20316	Certificate II in Meat Processing (Abattoirs)	●	Ipswich
AMP30322	Certificate III in Meat Safety Inspection	●	Toowoomba
NONAC11001	Introduction to Coffee Skills - Basic Barista	●	Charleville, Chinchilla, Ipswich, Roma, Toowoomba
SIT20322	Certificate II in Hospitality	●	Roma
SIT20421	Certificate II in Cookery	●	Ipswich, Toowoomba
SIT20421	Certificate II in Cookery	●	Ipswich, Kingaroy, Toowoomba
SIT30622	Certificate III in Hospitality	●	Ipswich, Toowoomba
SIT30622	Certificate III in Hospitality	●	Charleville, Ipswich, Roma, Toowoomba
SIT30821	Certificate III in Commercial Cookery	●	Ipswich, Toowoomba
SIT30821	Certificate III in Commercial Cookery	●	Charleville, Ipswich, Kingaroy, Roma, Toowoomba, Warwick
SIT50422	Diploma of Hospitality Management	●	Ipswich, Toowoomba
SITSS00068	Food Handling	●	Charleville, Chinchilla, Nurunderi, Roma
SITSS00069	Food Safety Supervision	●	Charleville, Chinchilla, Ipswich, Nurunderi, Roma, Toowoomba
SITSS00071	Responsible Service of Alcohol	●	Charleville, Chinchilla, Ipswich, Roma, Toowoomba

Course Mode

● On campus ● On campus with some online ● Online self-directed ● Online virtual classroom
 ● Online with on campus practical training ● Apprenticeship or traineeship



Trades

Learn the tricks of the trade, develop lifelong skills and earn qualifications to open the door on a rewarding career across a wide range of industries.

Develop the practical skills to work across a wide range of trade areas and specialisations including electrotechnology and refrigeration, building and construction, engineering and manufacturing, automotive, and safety.

No matter what qualification you choose, at TAFE Queensland you will learn from experienced teachers using industry-standard equipment and technology in our purpose-built facilities. You'll graduate with the skills you need to establish a rewarding career.

Vocational placement requirements may apply.

Career outcomes include: • Light Vehicle Mechanic • Electrician • Carpenter • Civil Construction Supervisor Structural Designer • Project Manager • Site Supervisor • Plumber • Hydraulic Design Consultant • Boilermaker Draftsperson • Engineering Associate • Automotive Electrical Technician • Welder • Joiner • Builder • Painter

Course		Mode	Location
Automotive			
AUR20220	Certificate II in Automotive Air Conditioning Technology	●	Ipswich, Kingaroy, Toowoomba, Warwick
AUR20420	Certificate II in Automotive Electrical Technology	●	Ipswich, Toowoomba
AUR21220	Certificate II in Automotive Underbody Technology	●	Ipswich, Toowoomba
AUR21220	Certificate II in Automotive Underbody Technology	●	Dalby, Ipswich, Kingaroy, Toowoomba, Warwick
AUR30320	Certificate III in Automotive Electrical Technology	●	Ipswich, Toowoomba
AUR30420	Certificate III in Agricultural Mechanical Technology	●	Dalby, Kingaroy, Toowoomba, Warwick
AUR30620	Certificate III in Light Vehicle Mechanical Technology	●	Dalby, Ipswich, Kingaroy, Toowoomba, Warwick

Course Mode

● On campus ● On campus with some online ● Online self-directed ● Online virtual classroom
● Online with on campus practical training ● Apprenticeship or traineeship

Course		Mode	Location
Automotive (continued)			
AUR31120	Certificate III in Heavy Commercial Vehicle Mechanical Technology	●	Charleville, Dalby, Ipswich, Kingaroy, Roma, Toowoomba, Warwick
AUR31120	Certificate III in Heavy Commercial Vehicle Mechanical Technology	●	Dalby, Ipswich, Kingaroy, Toowoomba
AUR31220	Certificate III in Mobile Plant Technology	●	Charleville, Dalby, Ipswich, Kingaroy, Roma, Toowoomba, Warwick
AUR31220	Certificate III in Mobile Plant Technology	●	Dalby, Ipswich, Kingaroy, Toowoomba
AUR31820	Certificate III in Heavy Commercial Trailer Technology	● ●	Warwick
AUR32518	Certificate III in Automotive Underbody Technology	●	Dalby, Ipswich, Kingaroy, Toowoomba, Warwick
AUR32721	Certificate III in Automotive Electric Vehicle Technology	● ●	Ipswich, Toowoomba
AURSS00064	Battery Electric Vehicle Inspection and Servicing Skill Set	●	Ipswich, Toowoomba, Warwick
MEM31419	Certificate III in Engineering - Fixed and Mobile Plant Mechanic	●	Dalby, Ipswich, Kingaroy, Roma, Toowoomba, Warwick
MEM31419	Certificate III in Engineering - Fixed and Mobile Plant Mechanic	●	Dalby, Ipswich, Kingaroy, Toowoomba, Warwick
Building and Construction			
CPC30220	Certificate III in Carpentry	●	Charleville, Ipswich, Kingaroy, Roma, Toowoomba
CPC32420	Certificate III in Plumbing	●	Toowoomba
MSF20522	Certificate II in Furniture Making Pathways	●	Toowoomba
MSF30322	Certificate III in Cabinet Making and Timber Technology	●	Toowoomba
RII20720	Certificate II in Civil Construction	●	Toowoomba
RII30820	Certificate III in Civil Construction Plant Operations	●	Toowoomba
RII30920	Certificate III in Civil Construction (Pipe Laying)	●	Toowoomba
RII30920	Certificate III in Civil Construction (Road Construction and Maintenance)	●	Toowoomba
SSCPC0029	General Construction Induction Training (GCIT) Skill Set	●	Nurunderi, Toowoomba, Roma
SSRII0005	Enter and Work in Confined Spaces Skill Set	●	Chinchilla, Ipswich, Toowoomba
SSRII0006	Work Safely at Heights Skill Set	●	Chinchilla

Course Mode

- On campus ● On campus with some online ● Online self-directed ● Online virtual classroom
- Online with on campus practical training ● Apprenticeship or traineeship

Course		Mode	Location
Electrotechnology and Refrigeration			
SSUET0002	Live LV Panel and CPR Rescue Skill Set	●	Chinchilla, Dalby, Ipswich, Kingaroy, Toowoomba, Warwick
UEE20120	Certificate II in Split Air Conditioning and Heat Pump Systems	●	Chinchilla, Kingaroy,
UEE22020	Certificate II in Electrotechnology (Career Start)	●	Toowoomba
UEE30820	Certificate III in Electrotechnology Electrician	●	Chinchilla, Ipswich, Kingaroy, Toowoomba
UEE30820 / UEE31220	Certificate III in Electrotechnology Electrician incorporating Certificate III in Instrumentation and Control (Dual award)	●	Chinchilla, Kingaroy
UEE31220	Certificate III in Instrumentation and Control	●	Chinchilla, Kingaroy
UEE33020	Certificate III in Electrical Fitting	●	Chinchilla, Ipswich, Kingaroy, Toowoomba
Engineering and Design			
MEM20105	Certificate II in Engineering	●	Dalby, Ipswich, Kingaroy, Toowoomba
MEM30219	Certificate III in Engineering - Mechanical Trade	●	Dalby, Ipswich, Kingaroy, Roma, Toowoomba
MEM30219	Certificate III in Engineering - Mechanical Trade	●	Dalby, Ipswich, Kingaroy, Toowoomba
MEM30522	Certificate III in Engineering - Technical	●	Ipswich, Toowoomba
MEM31922	Certificate III in Engineering - Fabrication Trade (Sheetmetal Working)	● ●	Ipswich
MEM31922	Certificate III in Engineering - Fabrication Trade (Boilermaking / welding)	●	Dalby, Ipswich, Kingaroy, Roma, Toowoomba
MEM31922	Certificate III in Engineering - Fabrication Trade (Boilermaking / welding)	●	Dalby, Ipswich, Kingaroy, Toowoomba
MEM40119	Certificate IV in Engineering	● ●	Dalby, Ipswich, Kingaroy, Toowoomba
NONAC03005	Technical Base for Manual Machining	●	Ipswich, Toowoomba
NONAC03024	Introduction to Welding	●	Dalby, Ipswich, Kingaroy, Toowoomba
NONAC03025	Welding Certification Preparatory	●	Toowoomba, Ipswich
NONAC03148	ISO9606 Certification of Welders for Fusion Welding of Steels	●	Toowoomba, Ipswich

Course		Mode	Location
NONAC03149	ISO9606 Weld Australia Certification Test	●	Toowoomba, Ipswich
NONAC03154	Stick - MMAW Certification (Plate). Ticket 1, 1E, 3, 3E - Weld Australia Certification (AS1796)	●	Toowoomba, Ipswich
NONAC03155	Stick - MMAW Certification (Pipe). Ticket 2, 4, 5 - Weld Australia Certification (AS1796)	●	Toowoomba, Ipswich
NONAC03156	TIG - GTAW Certification. Ticket 5, 7 - Weld Australia Certification (AS1796)	●	Toowoomba, Ipswich
NONAC03157	MIG - GMAW Certification. Ticket 8G - Weld Australia Certification (AS1796)	●	Toowoomba, Ipswich
NONAC03158	FLUX - FCAW Certification. Ticket 8F - Weld Australia Certification (AS1796)	●	Toowoomba, Ipswich
NONAC03159	Submerged ARC - SAW Certification. Ticket 9	●	Toowoomba, Ipswich
SSMSM0003	Gas Test Atmospheres Skill Set	●	Chinchilla

Course Mode

- On campus ● On campus with some online ● Online self-directed ● Online virtual classroom
 ● Online with on campus practical training ● Apprenticeship or traineeship

This image shows a single sheet of white paper with horizontal ruling lines. The lines are evenly spaced and run across the width of the page. There are no margins, text, or other markings on the paper.

This image shows a single sheet of white paper with horizontal ruling lines. The lines are evenly spaced and run across the width of the page. There are no margins, text, or other markings on the paper.

Biloela

22 Gladstone Road
Biloela Qld 4715

Charleville

66 Galatea Street
Charleville Qld 4470

Chinchilla

9 Zeller Street
Chinchilla Qld 4413

Dalby

463 Bunya Highway
Dalby Qld 4405

Gladstone

Level 3
72 Goondoon Street
Gladstone Qld 4680

Inala

54 Thrush Street
Inala Qld 4077

Ipswich

Corner Mary and Byrne Streets
Bundamba Qld 4304

Kingaroy

Corner Bunya Highway
and Geritz Road
Kingaroy Qld 4610

Nurunderi (Cherbourg)

Collins Road
Cherbourg Qld 4605

Rockhampton

42 William Street
Rockhampton Qld 4700

Roma

Timbury Street
Roma Qld 4455

Springfield

Education City Drive
Springfield Qld 4300

Toowoomba

100 Bridge Street
Toowoomba Qld 4350

Warwick

200 Dragon Street
Warwick Qld 4370



Proud to be a Queensland Government
subsidised training provider

1300 308 233 | tafeqld.edu.au

RTO 0275 | CRICOS 03020E